

® **INREKA PLOŠINY**

IP 14-3/A

BASIC INFORMATION

The working platform type trailer is four-armed construction with hinged arrangement arms. Two arms are side by side, third is telescopic from second arm and fourth is vertically on rest vehicle. The work cage has able to slight turning around vertical axis within the limits $\pm 40^\circ$. Work cage has maximum load for two persons with implements to 200kg + 10%. The turntable allows turning arms within the limits 340°. Stability props are push out by hand with hydraulic stabilization and props allows to lounch on slope 5°. Construction work platform allows fallback arm II. over 5° against arm I., this fallback allows to lounch work cage to ground The working platform is with traversing.



DRIVE HYDRAULIC PUMP

Drive hydraulic pump is derived from electric motor AC230V/50 Hz from public electrical power network and it has possibility on and off from working cage. On option working platform can be equip with electric generator and then drive of working platform type trailer will be independent on power supply from public electrical power network.

HYDRAULIC SYSTÉM

Hydraulic system safeguards supplies compressive oil for all hydraulic circuits work platforms. All working movements are provided hydraulic. Working movements of super-structure is possible control from two location. This control is from work cage or from location near turntable.

CARRIAGE UNIT

The basic superstructure of working platform IP14-3/A is placed on uniaxial trailer. The spare wheel, plastic box or electric generator are locating on trailer.

TECHNICAL DATA

Transport measurement:

- size 5,52m
- width 1,8m
- height 2,45m

Work reach:

- height 16,0m
- side reach 7 m
- turning 340
- width props 3,3m

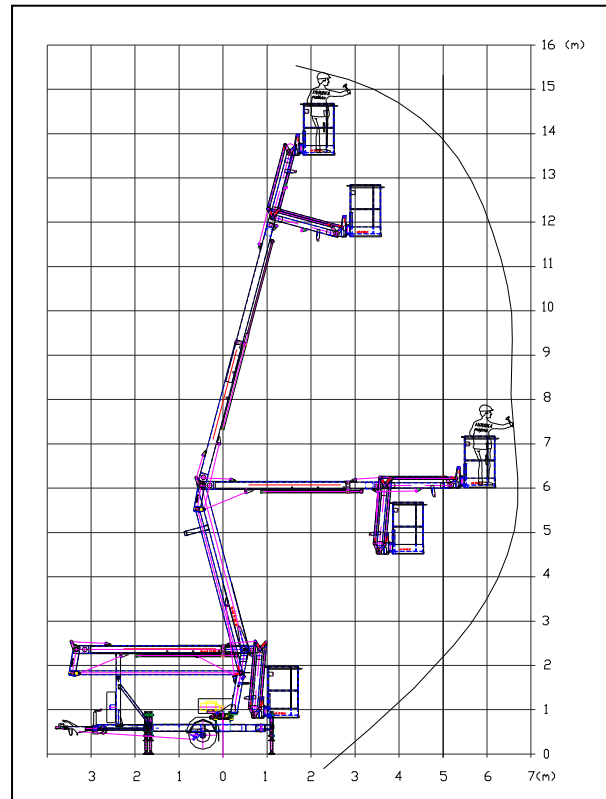
Work cage:

- proportions 0,7 x 1,1 m
- maximum load 200kg+10%

Weight:

- working platform 1680kg

Working diagram



SAFETY EQUIPMENT

The mechanical limitation end position of all arms. The hydraulic cylinders are procurement locks. The emergency starting from working cage. The equipment against overfreight working cage. The switch knob „TOTAL STOP“.

EQUIPMENT OPTIONS

The electric generátor 230V/50Hz, 22-6kW. Laminate working cage for increasing safeness under voltage. Dual insulation working cage for work under voltage AC 1000V or DC 1500V.

SUPPLIER

INREKA PLOŠINY
Uherský Brod
Rudice 231
687 32 Nezdenice

tel.: (+420) 572 637 722
(+420) 572 630 339
(+420) 603 803 192
(+420) 774 949 385
fax: (+420) 572 630 343

e-mail: inreka@inreka-plosiny.cz
<http://www.inreka-plosiny.cz>