

# ® **INREKA PLOŠINY**

## **IPK 16-3**

### ***BASIC INFORMATION***

The work platform is of tree-arms construction with swinging arrangement arms. Two arms are side by side and third arm is vertically on rear vehicle. The work cage has able to slight turning around vertical axis and work cage has maximum load for two persons with implements to 200 kg + 10 %. The turntable is with unrestricted turning in both directions. Hydraulic tilling stability props allows activity on slope 6°. Construction work platform allows fallback arm II. over 5° against arm I., this fallback allows to lounch work cage to ground. Standart fittings are two lockable plastic cases, warning beacon and reflector for lighting work place.



### ***DRIVE HYDRAULIC PUMP***

Hydraulic pump is fundamental source compressive oil. Pump is driven vehicle engine. Vehicle engine can be started from work cage. Hydraulic pump can be alternative source compressive oil, where pump is driven vehicle engine over electromagnetic clutch or hydraulic pump drive elektric motor 230V/50Hz.

### ***HYDRAULIC SYSTEM***

Hydraulic system safeguards supplies compressive oil for all hydraulic circuits work platforms. All working movements are provided hydraulic. Direct is control movement of props. Working movements of super-structure is possible control from two location. This control is from work cage or from location near turntable. Control is direct. Control location choose switch-over of spherical valve. This spherical valve is placed on location near turntable.

## ***CARRIAGE UNIT***

The work platform is possible mount on any undercarriage, where undercarriage has capacity weight except crew minimum 2000 kg. This type work platform was mounted on carriage unit:

MERCEDES SPRINTER, MULTICAR M26, MERCEDES UNIMOG, AVIA DAEWOO, IVECO, NISSAN, STEYER, RENAULD, TATRA 4x4.

The work platform can be solving constructional as the work platform dismantable.

## ***TECHNICAL DATA***

### **Transport measurement:**

- size 6,3m
- width 2,1m
- height 3,4m

### **Work reach:**

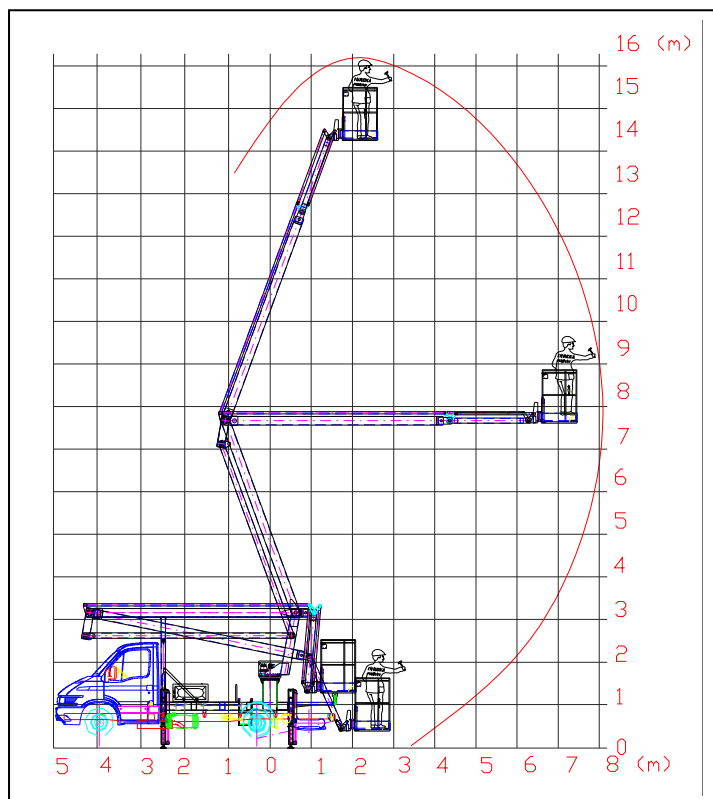
- height 16,2m
- side reach 7,9m
- turning no limits
- width props according to undercarriage

### **Work cage:**

- proportions 0,7 x 1,1 m
- maximum load 200kg+10%

### **Weight:**

- platform without undercarriage 2000kg



Working diagram

## ***SAFETY EQUIPMENT***

The mechanical limitation end position of all arms. The hydraulic cylinders are procuration locks. The emergency starting from working cage. The equipment against overfreight working cage. The switch knob „TOTAL STOP“, the activity truck body is bound on vehicle stabilization.

## ***EQUIPMENT OPTIONS***

Alternative drive by electric motor 230V/50Hz. Alternative drive DC 12V electric motor energize from accumulator batteries. The electric generator 230V/50Hz – 2,2 till 6kW. Laminate working cage for increasing safeness under voltage. Emergency starting from working cage. Dual insulation working cage for work under voltage AC 1000V or DC 1500V.

---

## ***SUPPLIER***

INREKA PLOŠINY  
Uherský Brod  
Rudice 231  
687 32 Nezdenice

tel.: (+420) 572 637 722  
(+420) 572 630 339  
(+420) 603 803 192  
(+420) 774 949 385  
fax: (+420) 572 630 343

e-mail: [inreka@inreka-plosiny.cz](mailto:inreka@inreka-plosiny.cz)  
<http://www.inreka-plosiny.cz>